

Smooth cushioning,  
gentle closing



## Portavant 120 – closes also heavy doors gently and smoothly!

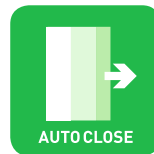
---



### COMFORT STOP

**The cushioning system for your safety:**

Slows the glass door effectively, gently and quietly irrespective of its weight and speed of closure, and does so over a distance of several centimetres.



### AUTO CLOSE

**The self-closing system to make you feel good:**

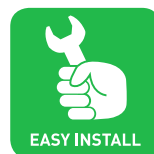
Draws the sliding sash with precision into its final position and ensures discretion and wellbeing in gently closed spaces.



### EXACT TRIGGER

**The mechanism for reliability:**

Ensures, thanks to a revolutionary design principle (patent pending), that the cushioning system always functions reliably.



### EASY INSTALL

**The solution for easy installation without glass cutout:**

Turns the installation of glass sliding doors into a “foolproof” sequence.



### SYSTEM FIT

**The modular solution for your installation:**

Offers solutions for almost any installation situation with modular system components in a variety of combinations.



## COMFORT STOP

The cushioning system for your safety and comfort

**COMFORT STOP** slows the glass door effectively, gently and quietly irrespective of its weight and speed of closure, and does so over a distance of several centimetres.

- Prevents the door from banging hard – with the associated noise and vibrations
- Reliably protects against glass breakage and damage to fittings and walls
- Prevents damage through doors "jumping out" or tilting
- Removes the risk of trapped fingers almost entirely

**COMFORT STOP** ensures that everything you appreciate remains safe.





## AUTO CLOSE

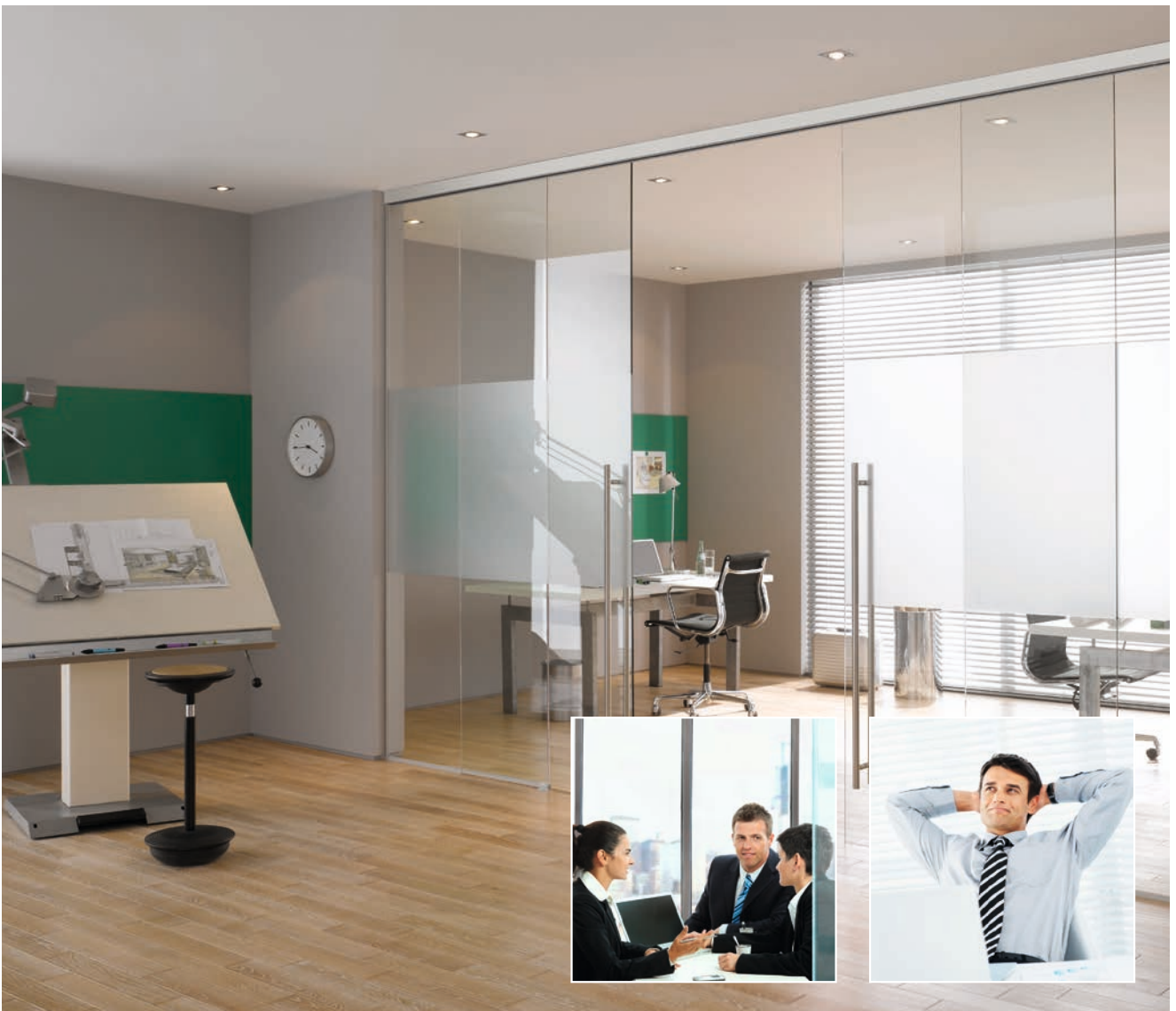
The self-closing system to make you feel good

**AUTO CLOSE** fully closes the glass door effectively, gently and quietly once it has been slowed down by the innovative cushioning system.

- Guarantees that the door closes completely even if not fully shut when in a hurry
- Keeps the door in position and prevents the door from opening by itself or bouncing back
- Undesirable consequences such as draughts,

energy wastage, lack of acoustic separation as well as visual impairment of a space because of doors not fully closed are a thing of the past

**AUTO CLOSE ensures discretion and wellbeing in gently closed spaces offering comfort, silence, pleasant warmth and privacy as required.**

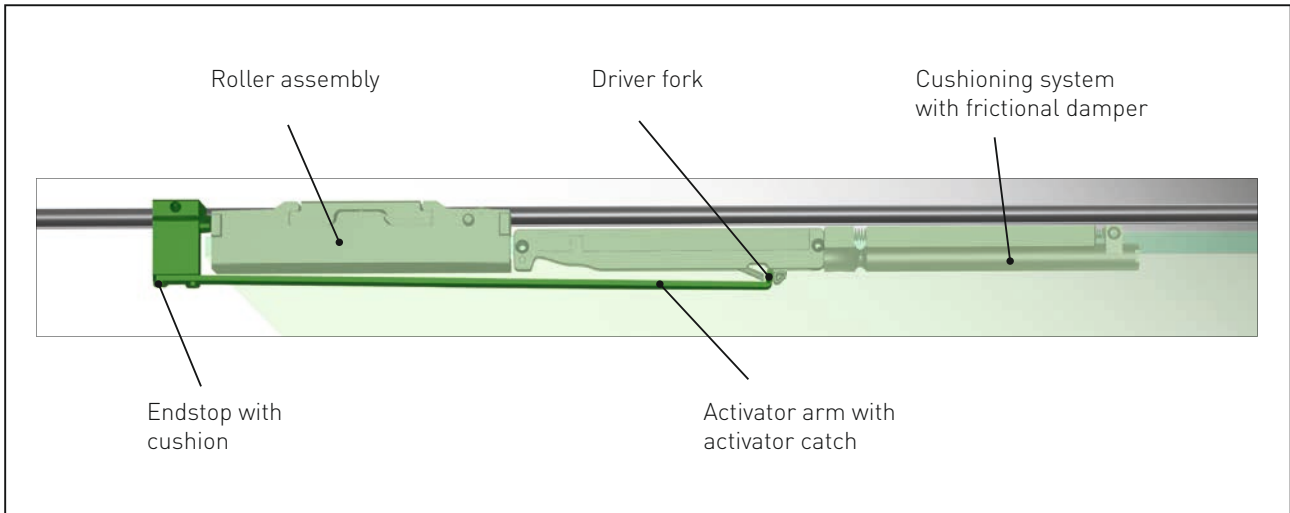




## EXACT TRIGGER

The mechanism for reliability

Inside Portavant 120 an intelligent design principle (patent pending) means outstanding quality and a long service life.



**The design principle offers decisive advantages in comparison to alternative systems:**

### Faultless assembly

The activator arm attached to the endstop ensures that the activator catch is always in the correct position and therefore always triggers the cushioning mechanism reliably. Damage to the cushioning system as a result of the faulty adjustment of the endstop or trigger is therefore impossible.

### Excess load protection

If the door is closed too hard, the door still has some momentum at the end of the cushioning process. In this case with Portavant 120, the endstop stops the door preventing components of the cushioning system from breaking.

### Self-correction through independent engaging of activator arm

The Portavant 120 self-correction mechanism means that the system remains fully functional even if the activator arm is not engaged completely after the assembly. If the door is carefully shut once and then opened again, the activator arm engages by itself.

**With EXACT TRIGGER the cushioning mechanism will always work correctly.**



## EASY INSTALL

The solution for easy installation without glass cutout



### No glass cutout necessary

The well-developed clamping technology makes work on the glass unnecessary. The suspension system has been developed in such a way that the sashes are securely held by the clamp mechanism. But if there is an exceptional requirement, the clamp mechanism can be combined with glass drill holes and safety studs.

### Ease of assembly

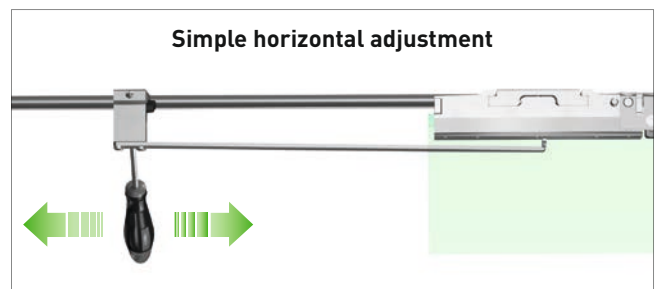
Portavant 120 impresses through its ease of assembly and simple handling in all installation situations:

- The sash can be hung on the mounted track from the front without difficulty. No need to hang the heavy sash into the cover profile!
- Anti-tilting devices and safety catches can be fixed at a later time.

### Easy repositioning even once assembly has been completed

Portavant 120 glass sliding doors can be adjusted sideways and in height at any time with only a few actions:

- Horizontal adjustment:  
The closed position of the door can be adjusted even once the cover profile has been fitted. The stop position of the sliding sash is readjusted simply by moving the endstop and activator arm. The cushioning system does not need to be readjusted. Nothing could be simpler!



- Vertical adjustment:  
Each roller assembly can be adjusted by +/- 4 mm in height to level the sash.

### Adjustable floor guide

The elegant floor guide convinces through its simple adjustment to take account of the various glass thicknesses. The plastic inserts will safely guide 8 mm to 12.76 mm glass sashes. The closely fitting guide prevents the sashes from "rattling". The friction of the floor guide is matched with the self-closing system.

**EASY INSTALL turns the installation of glass sliding doors into a "foolproof" sequence.**



## SYSTEM FIT

The modular solution for your installation

The beautifully shaped, sophisticated cover profile is only 70 mm high. It fits harmoniously into every discerning ambience – be it private or business.

The modular design construction of the Portavant 120 system means that logistics and stocks can be adapted to customer requirements. The system components can be

combined to take account of any installation situation and individual demands.

You have the choice of ordering either complete sets (incl. cover profiles, tracks and accessory kits) or individual components.

**With its modular components, SYSTEM FIT makes any installation project possible.**

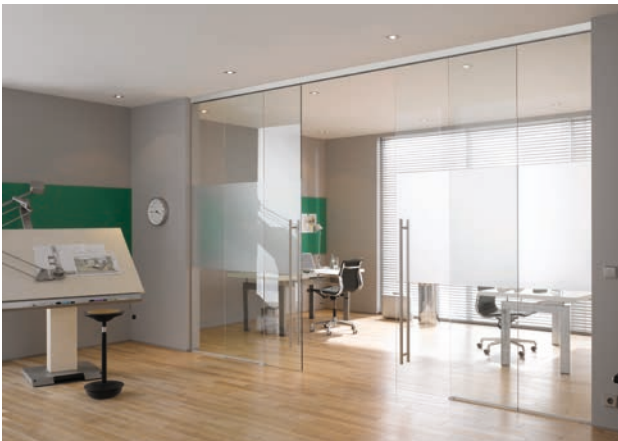
**The Portavant 120 system can be used in many different installation situations:**



**Wall-mounted track**  
one sash or two sashes



**Ceiling-mounted track**  
one sash or two sashes



**Ceiling-mounted track with sidelight**  
one sash or two sashes



**Track mounted on glass façade**  
one sash

## Familiar Willach quality

---

For more than 125 years Willach has stood for supreme quality, excellence in processing as well as the long service life of its products. You will find Willach's familiar high quality also in the products of the Portavant 120 range:

### Supreme technical quality:

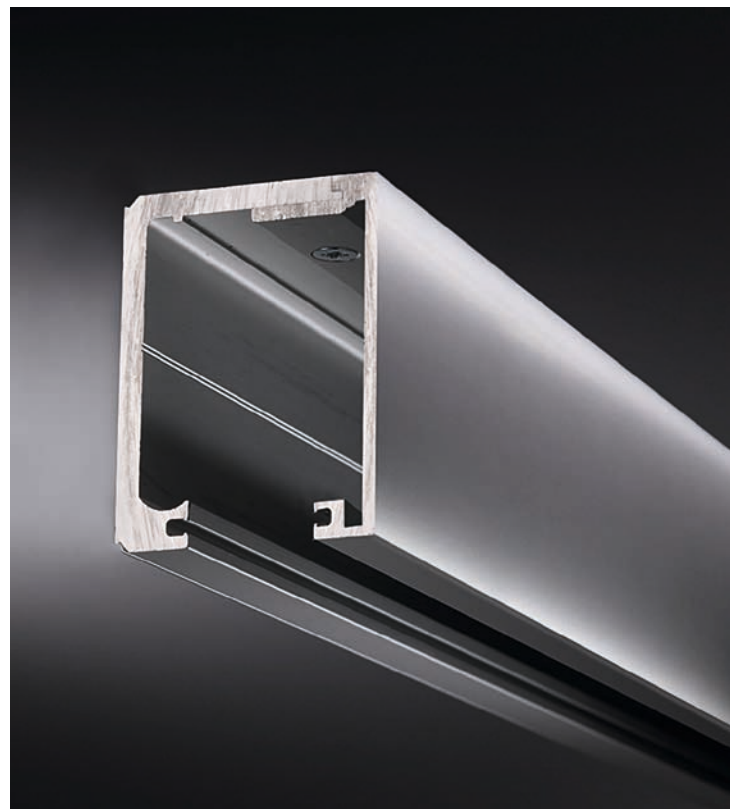
- Minimum initial rolling resistance (Grade 3, EN 1527) gives rise to the outstanding easy running characteristics
- Extremely long service life (100,000 cycles, EN 1527)
- Corrosion resistance (suitable for humid interior spaces in accordance with EN 1527/1670)
- No maintenance

### Traditional delivery reliability

The standard product range is held in stock in the factory at Ruppichteroth (Germany) and delivered with Willach's familiar delivery reliability and dependability.

### Competent advice

Competent advice and technical support for all questions are provided by technical office and field staff. With Portavant, too, you benefit from the company's traditionally high service quality.





## Technical information

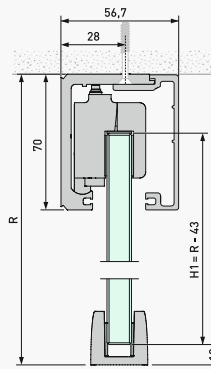
<b>Technical information for wall and ceiling mounting</b>	
Door weight	Up to 80 kg with cushioning system Up to 120 kg without cushioning system
Glass width for sliding door	< 720 mm without cushioning system Between 720 mm and 1050 mm with max. one cushioning system per sash ≥ 1050 mm with max. two cushioning systems per sash
Glass thickness for sliding door Tempered glass Laminated safety glass (made of tempered glass)	8 / 10 / 12 mm 8.76 / 10.76 / 12.76 mm
Glass thickness for sidelights Tempered glass Laminated safety glass	8 / 10 / 12 mm 8.76 / 10.76 / 12.76 mm
Available profile lengths	1996 mm, 2996 mm, 3996 mm, 5996 mm as well as fixed lengths (cut to measure)
Roller assemblies	High quality, precise roller bearings with plastic coating
Execution	One sash or two sashes; for right and left hand use; for ceiling mounting also with sidelight; colours: natural aluminium (EV1) or stainless steel effect (C 31, main visible surfaces brushed)

<b>Technical information for track mounted to glass façade</b>	
Door weight	Up to 80 kg with cushioning system Up to 120 kg without cushioning system
Glass width for sliding door	< 720 mm without cushioning system Between 720 mm and 1050 mm with max. one cushioning system per sash ≥ 1050 mm with max. two cushioning systems per sash
Glass thickness for sliding door Tempered glass Laminated safety glass (made of tempered glass)	8 / 10 / 12 mm 8.76 / 10.76 / 12.76 mm
Glass façade thicknesses Tempered glass Laminated safety glass	10 / 12 mm 10.76 / 12.76 mm
Available clear widths	1000 mm / 1200 mm available as complete sets, individual components for additional design possibilities can also be supplied.
Roller assemblies	High quality, precise roller bearings with plastic coating
Execution	One sash*, for right and left hand use; colours: natural aluminium (EV1) or stainless steel effect (C 31, main visible surfaces brushed)

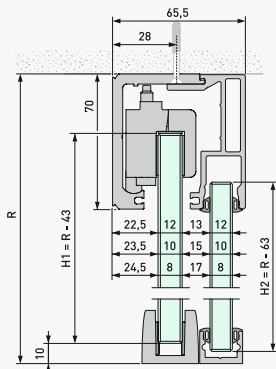
\*Please contact us for two-sash systems

# Broad model range to meet customer requirements

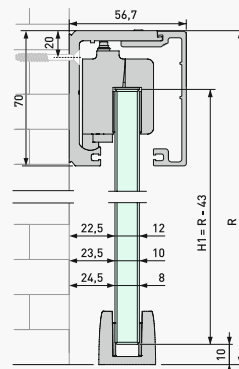
**Ceiling-mounted track**



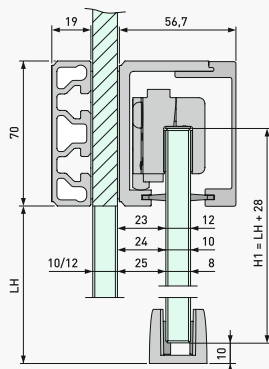
**Ceiling-mounted track with sidelight**



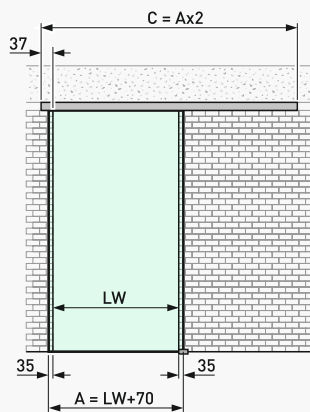
**Wall-mounted track**



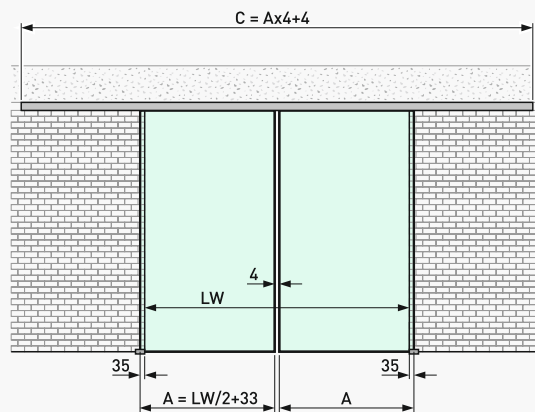
**Track mounted on glass façade**



**Systems with one sash without sidelight**



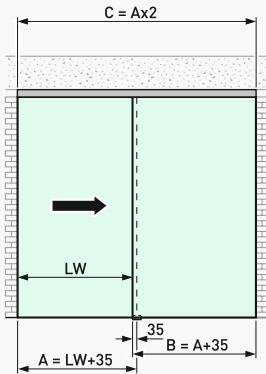
**Systems with two sashes without sidelight**



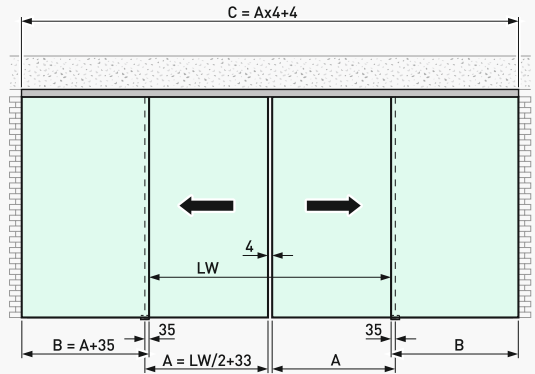
## Legend

A	= glass width of sliding sash
B	= glass width of sidelight
B0	= transom light width
C	= track length
H1	= glass height of sliding sash
H2	= glass height of sidelight
LH	= clear height
LW	= clear width (opening)
LW <sub>t</sub>	= clear width of door opening
R	= room hight/ upper edge of profile

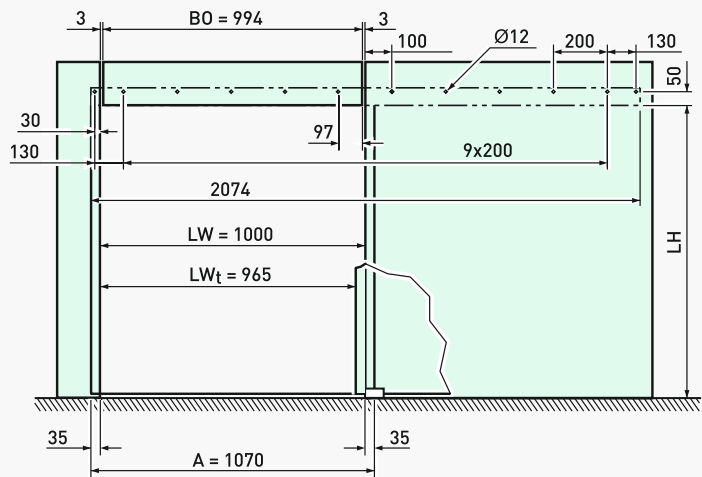
**Systems with one sash with sidelight**



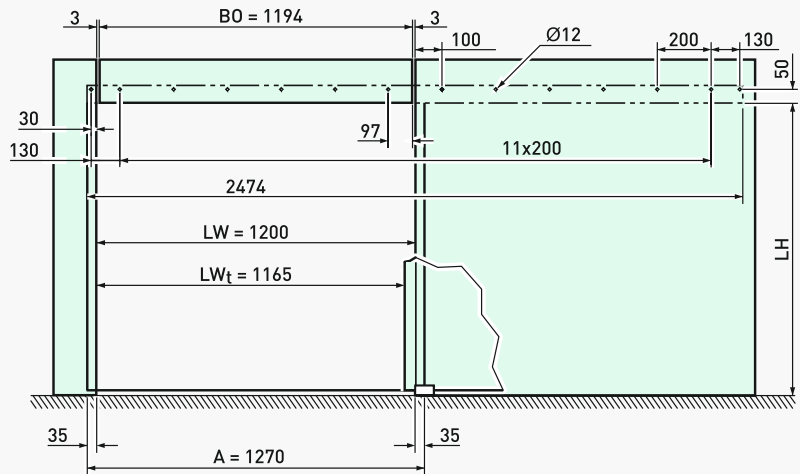
**Systems with two sashes with sidelight**



**Systems with track mounted on glass façade clear width 1000 mm**



**Systems with track mounted on glass façade clear width 1200 mm**





## The company

With its VITRIS product division, Willach is among the leading producers of glass fittings in Europe. Since its establishment in 1889, the manufacture of products to the highest quality and precision standards has been the supreme dictum of the company. Numerous technical innovations and intelligent solutions that paid close attention to the finest detail meant that Willach cemented its pioneering reputation at an early stage. With the Portavant product line, Willach today offers a range of high quality fittings for glass sliding doors. The VITRIS product range also includes a comprehensive modular system of showcase fittings, sliding door locks and slot bar systems for discerning interior, shop and trade show furnishings. VITRIS products are certified in accordance with ISO standards and are manufactured at our Ruppichterorth (Germany) production site to meet stringent manufacturing standards. This forms the basis for the excellent quality and consistently high level of availability of the complete VITRIS range.

Contact us and let us advise you!

Gebr. Willach GmbH  
Stein 2, D-53809 Ruppichterorth, Germany  
Phone: +49 (0)2295 92 08 -421/-427  
Fax: +49 (0)2295 92 08 429  
vitris@willach.com  
www.willach.com

**WillachGroup**  
since 1889



Distributor stamp

Product descriptions, drawings and illustrations represent neither assured characteristics nor declarations of guarantee. Subject to change.

Edition 03/2015